

經 *Jīng* = *Channel*

外 *Wài* = *Outside*

穴 *Xué* = *Acu-Points*

*Points Outside the Channel System*

*or*

*Extra Points*

Concerning the pronunciation/tone of 穴 Xue, the main character for an acu-point:  
In the PRC (mainland China), the second tone is used,  
but, in the ROC (Taiwan), the 4th tone is used.

Since most sources come from the PRC, I have decided to use the 2nd tone.

It also helps avoid confusion with xuè meaning blood.

點 Diǎn 'a spot' is also used to indicate an acu-point in Extra Pt names.

# 經 外 穴 Jīng Wài Xué / EXTRA POINTS

<u>Pinyin – Alphabetical List</u>	<u>Pt #</u>	<u>Pinyin – Alphabetical List</u>	<u>Pt #</u>
An Mian	#17	Qi Duan	#84
Ba Feng	#82	Qi Pang	#41
Ba Xie	#58	Qian Zheng	#14
Bai Chong Wo	#69	Qiu Hou	#7
Bai Lao aka Jing Bai Lao	#21	San Jiao Jiu	#41 (Qi Pang)
Bi Tong aka Shang Ying Xiang	#8	Shang Ba Feng	#83
Bi Zhong	#51	Shang Ba Xie	#57
Bian Tao	#19	Shang Lian Quan	#18
Chuan Xi	#24	Shang Ying Xiang	#8 (Bi Tong)
Da Gu Kong	#60	Shi Mian	#87
Dan Nang	#75	Shi Qi Zhui (Xia)	#37
Dang Yang	#2	Shi Xuan	#65
Ding Chuan	#23	Si Feng	#64
Du Yin	#85	Si Shen Cong	#1
Er Bai	#52	Tai Yang	#5
Er Jian	#6	Ti Tuo (Xue)	#43
Hai Quan	#11	Ti Wei	#39
He Ding	#70	Wai Ding Chuan	#25
Hu Kou	#55	Wai Huai Jian	#81
Hua Tuo Jia Ji	#27 (Jia Ji)	Wai Lao Gong	#56 (Luo Zhen)
Huan Zhong	#66	Wei Bao	#44
Jia Cheng Jiang	#13	Wei Guan Xia Shu	#30 (Yi Shu)
Jia Ji (Hua Tuo Jia Ji)	#27 (Hua Tuo)	Wei Wan Xia Shu	#30 (Yi Shu)
Jian Hou	#48	Wei Shang (Xue)	#40
Jian Nei Ling	#46	Wu Hu	#59
Jian Qian	#47	Wu Ming aka Er Zhui Xia	#28
Jian Tong Dian	#29	Xi Yi	#73
Jie He (Xue)	#26	Xia Ji Shu	#36
Jin-jin, Yu-ye	#12	Xia Zhi Shi	#33
Jing Bai Lao aka Bai Lao	#21	Xiao Gu Kong	#62
Jing Bi	#20	Xue Ya Dian	#22
Jing Gong	#32	Ya Tong	#63
Ju Quan	#10	Yao Qi	#38
Kuan Gu	#71	Yao Tong (Dian)	#54
Lan Wei	#74	Yao Yan	#35
Li Nei Ting	#86	Yao Yi	#34
Ling Hou	#77	Yi Long	#15
Ling Hou Xia	#78	Yi Ming	#16
Ling Xia	#76	Yi Shu aka Wei Guan/Wan Xia Shu	#30
Luo Zhen aka Wai Lao Gong	#56	Yin Tang	#3
Mai Bu	#68	Yu Yao	#4
Nao Qing	#79	Zhi Xie	#42
Nao Shang	#49	Zhong Kui	#61
Nei Huai Jian	#80	Zhong Quan	#53
Nei Xi Yan	#72	Zhou Jian	#50
Nei Ying Xiang	#9	Zi Gong	#45
Pi Gen	#31	Zuo Gu	#67

# 經外穴 Jīng Wài Xué / EXTRA POINTS

## Extra Points by Body Region

including World Health Organization  
W.H.O. 48, & NCCAOM 54\*

### Head & Face – 14 Pts (WHO=13 N=15)

1. Si Shen Cong	(WHO 1)	*
2. Dang Yang	(WHO 2)	*
3. Yin Tang	(WHO 3)	*
4. Yu Yao	(WHO 4)	*
5. Tai Yang	(WHO 5)	*
6. Er Jian	(WHO 6)	*
7. Qiu Hou	(WHO 7)	*
8. Bi Tong aka Shang Ying Xiang	(WHO 8)	**
9. Nei Ying Xiang	(WHO 9)	*
10. Ju Quan	(WHO 10)	*
11. Hai Quan	(WHO 11)	*
12. Jin-jin, Yu-ye	(WHO 12&13)	*
13. Jia Cheng Jiang		*
14. Qian Zheng		*

### Ear & Neck – 8 Pts (WHO=2 N=5\*)

15. Yi Long		
16. Yi Ming	(WHO 14)	*
17. An Mian		*
18. Shang Lian Quan		*
19. Bian Tao		
20. Jing Bi		
21. Jing Bai Lao aka Bai Lao	(WHO 15)	**
22. Xue Ya Dian		

### Back & Sacrum – 16 Pts (WHO=9 N=6\*)

23. Ding Chuan	(WHO 17)	*
24. Chuan Xi		
25. Wai Ding Chuan		
26. Jie He (Xue)		
27. Hua Tuo Jia Ji	(WHO 18)	*
28. Wu Ming aka Er Zhui Xia		
29. Jian Tong Dian		
30. Yi Shu aka Wei Guan Xia Shu	(WHO 19)	*
31. Pi Gen	(WHO 20)	*
32. Jing Gong		
33. Xia Zhi Shi		
34. Yao Yi	(WHO 21)	
35. Yao Yan	(WHO 22)	*
36. Xia Ji Shu	(WHO 23)	
37. Shi Qi Zhui Xia	(WHO 24)	*
38. Yao Qi	(WHO 25)	

### Chest & Abdomen – 7 Pts (WHO=1 N=4\*)

39. Ti Wei		
40. Wei Shang (Xue)		
41. San Jiao Jiu & Qi Pang		**
42. Zhi Xie		
43. Ti Tuo (Xue)		*
44. Wei Bao		
45. Zi Gong	(WHO 16)	*

### Upper Extremity – 20 Pts (WHO=11 N=13\*)

46. Jian Nei Ling		
47. Jian Qian		*
48. Jian Hou		
49. Nao Shang		
50. Zhou Jian	(WHO 26)	*
51. Bi Zhong		*
52. Er Bai	(WHO 27)	*
53. Zhong Quan	(WHO 28)	
54. Yao Tong (Dian/Xue)	(WHO 29)	*
55. Hu Kou		
56. Luo Zhen aka Wai Lao Gong	(WHO 30)	**
57. Shang Ba Xie		
58. Ba Xie	(WHO 31)	*
59. Wu Hu		
60. Da Gu Kong	(WHO 32)	*
61. Zhong Kui	(WHO 33)	*
62. Xiao Gu Kong	(WHO 34)	*
63. Ya Tong		
64. Si Feng	(WHO 35)	*
65. Shi Xuan	(WHO 36)	*

### Lower Extremity – 22 Pts (WHO=12 N=11\*)

66. Huan Zhong		*
67. Zuo Gu		
68. Mai Bu		
69. Bai Chong Wo	(WHO 37)	*
70. Kuan Gu	(WHO 38)	*
71. He Ding	(WHO 39)	*
72. (Nei) Xi Yan	(WHO 40&41)	*
73. Xi Yi		
74. Lan Wei (Xue)	(WHO 42)	*
75. Dan Nang (Xue)	(WHO 43)	*
76. Ling Xia		
77. Ling Hou		
78. Xia Ling Hou		
79. Nao Qing		
80. Nei Huai Jian	(WHO 44)	*
81. Wai Huai Jian	(WHO 45)	*
82. Ba Feng	(WHO 46)	*
83. Shang Ba Feng		
84. Qi Duan	(WHO 47)	*
85. Du Yin	(WHO 48)	
86. Li Nei Ting		
87. Shi Mian		

## Head, Face & Neck Points

(22 pts – 17 bold – 15/48 W.H.O. – NCCAOM = 19/54)

### Points on Top of the Head

1. 四神聰

**Sì Shén Cōng = Four (Points for) Mental Clarity**

(NCCAOM 39)

(WHO 1)

literally 4 Spirits w/ Sharp Hearing; 4 Intelligent-Astute-Clever Spirits

(M-HN-1 ACT p.367)

(4 Spirits See, Hear & Think Clearly)

Location:

• 4 pts on top of the head - 1 cun anterior, posterior, left & right of GV-20 (the 4 directions)

Indications:

• calm mind/spirit – headache (esp. vertex), dizziness, seizures, mania, hydrocephalus

2. 當陽

**Dāng Yáng = Manage Yang**

(NCCAOM 9)

(WHO 2)

(Dr So p.35, LD p.390, 2001 p.8, ACT p.X)

Location:

• 1 cun posterior to the anterior hairline, on a line projected upward from the pupil  
(0.5 cun posterior to GB-15) (level with GV-23 & BL-5)

Indications:

• whole body overheated (w/ swollen neck = frog epidemic); dizziness, hypertension  
eye problems, dim vision, nasal congestion, common cold or flu

### Points on the Forehead & Temple

3. 印堂

**Yìn Táng = Seal Hall, Hall of Seals (the glabella)**

(NCCAOM 50)

(WHO 3)

aka Què Zhōng = Middle of the Watchtowers

(M-HN-3 ACT p.144)

aka Tiān Mù = Celestial/Heavenly Eye

Location:

• on GV at the midpoint between the eyebrows (BL-2)

Indications:

• calm spirit – headache, dizziness/vertigo, insomnia; nasal problems, eye problems;  
swelling of the sublingual veins (blood stag) ; convulsions, vomiting; hypertension, eclampsia  
\* [Ling Shu states this area can be examined to assess the condition of the Lungs]

4. 魚腰

**Yú Yāo = Fish's Waist**

(NCCAOM 51)

(WHO 4)

(M-HN-6 ACT p.146)

Location:

• the midpoint of each eyebrow, directly above the pupil (1 unit below GB-14)

Indications:

• eye problems, supraorbital pain, sinusitis, facial paralysis

5. 太陽

**Tài Yáng = Very/Great Yang (Abundant Yang)**

(NCCAOM 40)

(WHO 5)

(M-HN-9 ACT p.145)

Location:

• on the temple 1 cun posterior to the midpoint of the line connecting TB-23 & GB-1

alt. Location:

• 1 cun posterior to the outer canthus

Indications:

• headaches (esp. unilateral), eye problems, trigeminal neuralgia, facial paralysis, toothache

經外穴 **Jīng Wài Xué / EXTRA POINTS – POINT ACTIONS**  
Locations and Primary Indications

### Points on the Ear

#### 6. 耳尖

#### **Ěr Jiān = Ear Apex**

aka Er Yong = Ear Bubbling/Gushing

(NCCAOM 13)

(WHO 6)

(M-HN-10 ACT p.367)

Location:

• at the apex of the ear; fold the ear forward, the crease marks the spot

Indications:

• high fever, furuncles, conjunctivitis, pannus & other opacities of the eye; migraines, high BP

### Points Around the Eyes

#### 7. 球後

#### **Qiú Hòu = Behind the (Eye) Ball**

(NCCAOM 32)

(WHO 7)

(M-HN-8 ACT p.150)

Location:

• between the eyeball and the infra-orbital ridge, midway between the outer canthus & ST-1

Indications:

• eye, vision and optic nerve problems such as optic nerve atrophy or neuritis, myopia, glaucoma, opacity of the vitreous body, retinitis pigmentosa, esotropia (convergent squint)

7a. Shàng Míng = Upper Brightness – between the eyeball and the orbit, at the midpoint of the supraorbital ridge

• optic nerve atrophy etc.

(N-HN-4 ACT p.150)

7b. Wài Míng = Outer Brightness – between the eyeball and the supraorbital ridge, 0.3 cun above the outer canthus

• optic nerve atrophy etc.

(N-HN-6 ACT p.151)

### Points In & Around the Nose

#### 8. 鼻通

#### **Bí Tōng = Nose Open or Unblock the Nose**

aka Shàng Yíng Xiāng = Upper LI-20 - (Upper/Above Welcome Fragrance)

(NCCAOM 6)

(WHO 8)

(NCCAOM 35)

(M-HN-14 ACT p.155)

Location:

• on the face, at the superior end of the naso-labial groove

Indications:

• all nasal problems

#### 9. 內迎香

#### **Nèi Yíng Xiāng = Inner LI-20**

(NCCAOM 27)

(WHO 9)

(M-HN-35 ACT p.370)

Location:

• inside the nose, at the junction of the alar cartilage and the nasal concha

Indications:

• heat stroke, syncope, conjunctivitis

經外穴 **Jīng Wài Xué / EXTRA POINTS – POINT ACTIONS**  
*Locations and Primary Indications*

**Points In & Around the Mouth**

10. 聚泉 **Jù Quán = Gather/Congregate/Assemble at the Spring** (NCCAOM 22)  
(WHO 10)  
(M-HN-36 ACT p.370)
- Location: • on the surface of the tongue, at the midpoint  
Indications: • paralysis of the tongue, decreased sense of taste; thirst/hunger/diabetes; asthma
11. 海泉 **Hǎi Quán = Sea of Saliva** (NCCAOM 14)  
(WHO 11)  
(M-HN-37 ACT p.370)  
aka She Xia or = Under the Tongue  
She Xia Zhong Feng = Under Tongue & Sealed in Middle
- Ghost pt name: • Guǐ Fēng = Ghost/Demon Enclosed  
Location: • on the underside of the tongue - superior to the frenulum attachment (betw Jin-jin & Yu-ye)  
Indications: • hiccups, glossitis, xiao-ke/diabetes symptoms (ghost pt. indications: psychosis)
12. 金津 玉液 **Jīn-jīn Yù-yè = Gold Liquids & Jade Fluids** (NCCAOM 21)  
(WHO 12 & 13)  
(M-HN-20 ACT p.368)
- Location: • 2 pts under the tongue - at the midpoint of the left & right sublingual veins  
(Jin-jin is on the left vein, Yu-ye is on the right vein)  
Indications: • dry mouth, extreme thirst (xiao-ke/diabetes);  
tongue & speech problems (stomatitis, glossitis, tonsillitis; aphasia)
13. 夾承漿 **Jiā Chéng Jiāng = Pinch CV-24** (NCCAOM 18)  
(Catch Saliva/Spittle, For Drooling)  
(M-HN-18 ACT p.158)  
aka Ké Liáo = Chin Bone-Holes
- Location: • on the chin, at the mental foramen, ~1.5 cun to either side of CV-24  
(at the ends of the mento-labial groove, usually below the corners of the mouth)  
Indications: - excessive salivation/drooling;  
- trigeminal neuralgia, facial tics, spasms or paralysis, (Bell's palsy)

經外穴 Jīng Wài Xué / EXTRA POINTS – POINT ACTIONS  
Locations and Primary Indications

Points in Front of the Ear

14. 牽正

**Qiān Zhèng = Pull Correct or Pull Aright**

(NCCAOM 29)

(N-HN-20 ACT p.156)

- Location:
- on the side of the face - 0.5 to 1 cun anterior to the attachment of the earlobe.  
(in the masseter muscle midway between ST-6 & 7)
- Indications:
- facial paralysis (Bell's palsy), TMD; parotitis; mouth ulcers

Points Behind the Ear

15. 醫聾

**Yī Lóng = Treat Deafness**

(N-HN-15 ACT p.162)

- Location:
- behind the ear - 0.5 cun superior to TB-17, at the base of the auricle
- Indications:
- deafness, tinnitus, deaf mutism

16. 翳明

**Yì Míng = Screen Brightness (Eye Screens)**

(NCCAOM 49)

(WHO 14)

(M-HN-13 ACT p.162)

- Location:
- behind the ear - 1 cun posterior to TB-17 (midway between TB-17 & An Mian)
- Indications:
- eye problems: esp. screens: e.g. cataracts, film, opacity, nebulae;  
myopia, night blindness/nyctalopia  
tinnitus, vertigo, insomnia, headache; mental disorders

17. 安眠

**Ān Mián = Peaceful/Tranquil Sleep**

(NCCAOM 1)

(N-HN-54 ACT p.163)

- Location:
- behind the ear - midway between TB-17 & GB-20  
(posterior edge of mastoid, slightly above & behind GB-12)
- Indications:
- insomnia; palpitations, hysteria, mental illness; headache, vertigo

經外穴 **Jīng Wài Xué / EXTRA POINTS – POINT ACTIONS**  
Locations and Primary Indications

**Points on the Front of the Neck**

(NCCAOM 34)

18. 上廉泉

**Shàng Lián Quán = Upper CV-23**

Upper Pure Spring / Above Ridge Spring

(M-HN-21 ACT p.165)

Location:

- under the chin - on the midline, midway between the hyoid & the chin, 1/2 cun superior to CV-23

Indications:

- hypo or hyper salivation, impaired/slurred speech, mutism (paralysis of hypoglossal nerve); inflammations of the throat or tongue (tonsillitis, pharyngitis, stomatitis)

19. 扁桃

**Bìáo Táo = Flat/Flattened Peach(pit) = (Tonsils)**

(M-HN-26 ACT p.166)

Location:

- on the neck, in the depression lateral to the hyoid bone & anterior to the carotid artery

Indications:

- tonsillitis, pharyngitis, laryngitis

20. 頸臂

**Jǐng Bì = Neck & Arm**

(M-HN-41 ACT p.171)

Location:

- in the supraclavicular fossa, 1 cun superior to the clavicle at the posterior edge of the SCM in the scalenes (inferior to LI-17 & medial to ST-12)

Indications:

- paralysis or parasthesias of the arm - thoracic outlet syndrome

**Points on the Back of Neck**

(NCCAOM 4 & 20)

21. 百勞

**(Jǐng) Bǎi Láo = (Neck) Bai Lao = 100 Taxations / Complete Fatigue** (WHO 15)

- aka Bǎi Láo, but this is an alternate name for GV-14, thus the extra point is designated Jing Bai Lao (NCCAOM uses both names)

(M-HN-30 ACT p.369)

Location:

- on the back of the neck - 1 cun inferior to the posterior hairline & 1 cun lateral to the midline

Indications:

- scrofula (cervical TB), neck pain & stiffness, cough (whooping cough); postpartum aching (mono)

22. 血壓點

**Xuè Yā Diǎn = Blood Pressure Spot/Point**

(N-BW-2 ACT p.345)

Location:

- on the back of the neck - 2 cun lateral to the spinous process of C<sub>6</sub> [slightly superior to SI-15]

Indications:

- high or low blood pressure / hypo or hypertension

w/ ST-9



## ***Back & Lumbo-Sacral Points***

(16 pts – 9 bold – 9/48 W.H.O. – NCCAOM = 6/54)

### **Points on the Upper Back & Shoulder**

23. 定喘

**Dìng Chuǎn = Stabilize Dyspnea (Gasping & Panting)**

(NCCAOM 11)

(WHO 17)

(哮喘 xiào = wheeze)

(M-BW-1 ACT p.194)

Location:

• 0.5 cun lateral to the midline, level with the space inferior to the spinous process of C<sub>7</sub>

Indications:

• asthmatic breathing, all types of dyspnea, cough; stiff neck; urticaria/itching (eczema)

24. 喘息

**Chuǎn Xī = Labored Breathing or Dyspnea Relief**

(xī = respiration, it also means to rest)

(FCA p.401)

Location:

• 1 cun lateral to the midline, level with the space inferior to the spinous process of C<sub>7</sub>

Indications:

• asthmatic breathing, all types of dyspnea, cough; stiff neck; urticaria

25. 外定喘

**Wài Dìng Chuǎn = Outer Ding Chuan**

(N-BW-5 ACT p.345)

Location:

• 1.5 cun lateral to the midline, level with the space inferior to the spinous process of C<sub>7</sub>

Indications:

• cough, asthma, chronic bronchitis

26. 結核穴

**Jié Hé (Xué) = Knots & Kernels (Point)**

(M-BW-6 ACT p.346)

Location:

• 3.5 cun lateral to the midline, level with the space inferior to the spinous process of C<sub>7</sub>  
(1.5 cun lateral to SI-15; or slightly medial to TB-15)

Indications:

• cervical lumps & nodules, tuberculosis (all types)

經外穴 Jīng Wài Xué / EXTRA POINTS – POINT ACTIONS  
Locations and Primary Indications

Points on the Mid Back

(NCCAOM 17)

27. 夾脊 (Huá-Tuó) **Jiā-Jǐ = (Hua Tuo's) Pinch the Spine** / Para-Spinal Pts (WHO 18)  
(M-BW-35 ACT p.217)

Location: • 17 bilateral pts – on either side of the spine, ~0.75 cun lateral to the midline, level with the space inferior to each spinous process from T<sub>1</sub> to L<sub>5</sub>  
alt. version = • 24 bilateral pts – from C<sub>1</sub> to L<sub>5</sub>  
Indications: • disorders of the spine & nerves; pain or disease at corresponding level of the body  
symptom patterns related to zang or fu organ at same level (actions similar to back shu pts)

28. 無名 Wú Míng = Without Name  
aka Èr Zhuī Xià = Below 2nd Vertebra (Outline p.209)

Location: • on the posterior midline, in the space inferior to the spinous process of T<sub>2</sub>  
Indications: • mental diseases, mania, psychosis; seizures; malaria

29. 肩痛點 Jiān Tòng Diǎn = Shoulder Pain Spot (Sore Shoulder Point)  
(N-BW-9 ACT p.346)

Location: • at the midpoint of the lateral edge of the scapula (in the latissimus/teres)  
Indications: • problems of the shoulder joint & surrounding soft tissues, paralysis of the upper limb

30. 胰 (俞) 腧 Yí Shù = Pancreas Shu/Point  
(NCCAOM 44)  
(WHO 19)  
(M-BW-12 ACT p.377)

aka 胃脘下腧 Wèi Wǎn Xià Shù = Lower Epigastrium Shu (pylorus/duodenum/pancreas assoc pt)  
aka 胃管下腧 Wèi Guǎn Xià Shù = Lower Stomach Pipe/Duct/Valve Shu (NCCAOM & WHO use this name)

Location: • 1.5 cun lateral to the midline, level with the space inferior to the spinous process of T<sub>8</sub>  
Indications: • dry throat, xiao-ke/diabetes, stomach disorders - intercostal neuralgia

**Points in the Lumbar Region**

31. 痞根

**PI Gēn = Abdominal Swelling/Lump Root**

(NCCAOM 28)

(WHO 20)

(M-BW-16 ACT p.378)

Location:

• on the lower back, 3.5 cun lateral to the space inferior to the spinous process of L<sub>1</sub>

Indications:

• enlarged liver or spleen (hepato/splenomegaly), stomach, low back or hernia pain;  
kidney prolapse; gastritis, enteritis, diarrhea or constipation  
(tumors, endometriosis)

32. 精宮

**Jīng Gōng = Essence Palace or Palace of Essence**

(Maciocia p.475)

Location:

• on the lower back, 3.5 cun lateral to the space inferior to the spinous process of L<sub>2</sub>  
0.5 cun lateral to BL-23a (Zhi Shi, BL-47/52) (GM)

Indications:

• tonifies Kidneys, especially Kidney essence (jing), impotence & infertility

33. 下志室

**Xià Zhì Shì = Below or Lower Zhi Shi (Will Chamber (BL-23a/47/52)**

(Li Ding p.412)

Location:

• on the lower back, 3 cun lateral to the midline & 1 cun inferior to Zhi Shi (L<sub>3</sub>)

Indications:

• strengthens Kidney yang to treat impotence, seminal incontinence, lumbar ache

34. 腰宜

**Yāo Yí = Lumbar Suitable/Proper/Good for**

(WHO 21)

(M-BW-23 ACT p.378)

Location:

• on or above the iliac crest, 3 cun lateral to the space inferior to the spinous process of L<sub>4</sub>

Indications:

• soft tissue injury to the low back, esp. quadratus; GYN problems

經外穴 **Jīng Wài Xué / EXTRA POINTS – POINT ACTIONS**  
*Locations and Primary Indications*

---

35. 腰眼

**Yāo Yǎn = Lumbar Eye-sockets** (Eyes of the Waist)

(NCCAOM 48)

(WHO 22)

(M-BW-24 ACT p.212)

Location:

- the dimple in the lateral lumbar/iliac crest area, the depression is 3 to 4 cun lateral to the midline, level with a lumbar spinous process ranging from L<sub>3</sub> to L<sub>5</sub> (variability is primarily due to differences between male & female pelvic structure)

Indications:

- acute or chronic low back pain, kidney prolapse; orchitis; diabetes; GYN problems (esp. dysmenorrhea)

36. 下極 (俞) 腧

**Xià Jí Shù = Lower Pole=Spine Shu/Point**

(WHO 23)

aka Shí Wǔ Zhuī = 15th vertebra

(M-BW-21 ACT p.378)

Location:

- on the midline - below the spinous process of L<sub>3</sub> (between GV-3 & GV-4)

Indications:

- lumbago; abdominal pain, diarrhea; urgent, frequent urination, dysuria; hernia pain

37. 十七椎下

**Shí-Qī Zhuī-Xià** (10+7 Vertebra-Below) **Under the 17th Vertebra**

(NCCAOM 36)

(WHO 24)

(M-BW-25 ACT p.213)

Location:

- on the posterior midline - below the spinous process of L<sub>5</sub> (at the lumbo-sacral jct)

Indications:

- lumbar &/or sacral pain; paraplegia due to trauma, sequela of childhood paralysis; sciatica; anal diseases - dysmenorrhea, uterine bleeding - malposition of the fetus (moxa)

38. 腰奇

**Yāo Qí = Lumbar Strange/Astonishing**

(WHO 25)

(M-BW-29 ACT p.379)

Location:

- on the posterior midline - below the second sacral tubercle (S<sub>2</sub>) (level with the inferior margin of the PSIS) (between the 2nd sacral foramina i.e. BL-32's)

Indications:

- seizures (epilepsy), depressive or manic insanity; constipation

## *Chest & Abdomen Points*

(6 pts – 2 **bold** – 1/48 W.H.O. – NCCAOM = 4/54)

39. 提胃

Tí Wèi = Lift or Raise the Stomach

(N-CA-10 ACT p.343)

Location:

- on the abdomen, 4 cun superior to the umbilicus & 4 cun lateral to the midline (CV-12)  
(i.e. 2 cun lateral to ST-21 or 1 cun above Sp-16)

Indications:

- stomach prolapse (sinking, dragging sensation in the abdomen), indigestion  
(Sp) qì xián

40. 胃上

Wèi Shàng (Xué) = Stomach Up or Ascend the Stomach (Pt)

(N-CA-18 ACT p.180)

Location:

- on the abdomen, 2 cun superior to the umbilicus & 4 cun lateral to the midline (CV-10)  
(2 cun lateral to ST-23, 1 cun below Sp-16)

alt. Location:

- 2.5 cun lateral to CV-10 (1/2 cun lateral to ST-23)

Indications:

- abdominal distention, stomach prolapse (sinking, dragging sensation in the abdomen)

41. 三角灸

Sān Jǎo Jiǎo = Three Horns/Angles Moxa (Moxa Triangle)

(NCCAOM 33)

(M-CA-23 ACT p.376)

Location:

- 3 points forming an equilateral triangle with the apex being CV-8,  
the base & sides are the client's mouth width.

aka 臍旁

Qí-Páng = the 2 points forming the base of the above triangle

(NCCAOM 31)

Indications:

- chronic enteritis, colic, abdominal pain & spasm, umbilical hernia, running piglet

(FCA p.403)

經外穴 **Jīng Wài Xué / EXTRA POINTS – POINT ACTIONS**  
*Locations and Primary Indications*

---

42. 止瀉

**Zhǐ Xiè = Stop Diarrhea**

(N-CA-3 ACT p.343)

Location:

- on the midline of the lower abdomen, 2.5 cun inferior to the umbilicus (midway between the navel & pubic symphysis or midway between CV-4 & CV-5)

Indications:

- diarrhea, enteritis; intestinal ascariasis; enuresis or urinary retention

43. 提托

**Tí Tuō (Xué) = Lift & Support (Point)**

(NCCAOM 41)

(N-CA-4 ACT p.186)

Location:

- on the lower abdomen, 3 cun inferior to the umbilicus and 4 cun lateral to the midline i.e. on Sp channel, 4 cun lateral to CV-4 (1.7 cun inferior to Sp-14)

Indications:

- prolapsed uterus; hernia; lower abdominal pain

44. 維胞

**Wéi Bāo = Uphold Uterus**

(M-CA-16 ACT p.187)

Location 1:

- on the lower abdomen, level with the ASIS, just medial to GB-27 (between Sp & GB) on the superior edge of the inguinal ligament (betw Ti Tuo & GB-27) (ACT)

Location 2:

- immediately inferior to the ASIS (inferior & sl. lateral to Wei Dao, GB-28) (IDCA)

Location 3:

- medial to the lower edge of the ASIS (slightly inferior & medial to Wei Dao, GB-28) (2001)

Indications:

- prolapsed uterus; hernia; intestinal dysfunction

45. 子宮

**Zǐ Gōng = Child's Palace (Uterus) & adnexa**

(NCCAOM 54)

WHO 16)

(M-CA-18 ACT p.189)

Location:

- on the lower abdomen, 1 cun superior to the pubic crest and 3 cun lateral to the midline (i.e. 3 cun lateral to CV-3)

Indications:

- infertility, irregular menses, dysmenorrhea, prolapsed uterus; eclampsia cystitis, orchitis; appendicitis; pelveo-peritonitis; pyelonephritis

***Upper Extremity Points***  
(20 pts – 11 bold – 11/48 W.H.O. – NCCAOM = 11/54)

46. 肩內陵

**Jiān Nèi Líng = Shoulder Inner Mound**

(NCCAOM 19)

(M-UE-48 ACT p.223)

Location:

• in the anterior deltoid - midway between the anterior axillary fold and LI-15 (on Lu chan.)

Indications:

• problems of the shoulder joint & surrounding soft tissues (+ indications as for LI-15)

47. 肩前

**Jiān Qián = Front of the Shoulder (Anterior Shoulder)**

(NCCAOM 19)

(IDCA p.94)

Location 1:

• same as Jian Nei Ling (ACT)

Location 2:

• 1 cun superior to the anterior axillary fold (Atlas & IDCA)

Location 3:

• 1.5 cun superior to the anterior axillary fold (2001)

Indications:

• problems of the shoulder joint & surrounding soft tissues (+ indications as for LI-15)

48. 肩後

**Jiān Hòu = Back of the Shoulder (Posterior Shoulder)**

(IDCA p.94)

Location:

• 1.5 cun superior to the posterior axillary fold (1/2 cun above SI-9)

Indications:

• problems of the shoulder joint & surrounding soft tissues (+ indications as for SI-9 & 10)

\*\*\* 肩三針

**Jiān Sān Zhēn = Shoulder Three Needles or 3 Needles at/for the Shoulder**

(IDCA p.94)

Location: 3 pts } • LI-15, Jian Qian & Jian Hou used as a group

Indications:

• wide variety of shoulder problems; pain, paralysis, or numbness of the upper extremity

經外穴 **Jīng Wài Xué / EXTRA POINTS – POINT ACTIONS**  
Locations and Primary Indications

---

49. 臑上      **Nào Shàng = Above/Upper (Bi) Nao (LI-14)**  
aka Jiān Zhōng = Shoulder Center or Mid Shoulder/Deltoid (N-UE-14 ACT p.228)

Location:      • above LI-14, on the lateral aspect of the upper arm, in the center of the deltoid, midway between the acromion & the insertion of the deltoid on the humerus

Indications:      • upper arm & shoulder pain; problems of abduction; paralysis of the upper limb

50. 肘尖      **Zhǒu Jiān = Elbow Apex / Tip of the Elbow**  
(NCCAOM 53)  
(WHO 26)  
(M-UE-46 ACT p.386)

Location:      • at the tip of the olecranon (flex the elbow)

Indications:      • scrofula (Hodgkin's, AIDS); general inflammation, abscess (appendicitis)

**Points on the Anterior Forearm**

51. 臂中      **Bì Zhōng = Middle of the ForeArm**  
(NCCAOM 7)  
(M-UE-30 ACT p.247)

Location:      • on the anterior forearm, between the flexor carpi radialis & palmaris longus tendons, midway between the wrist & elbow folds - i.e. on the Pericardium channel (6 cun up or down) approx. where the bodies of these muscles end & their tendons begin

Indications:      • pain in the forearm, carpal tunnel syndrome; upper limb paralysis; hysteria

52. 二白      **Èr Bái = 2 Whites** (white refers to the anus)  
(NCCAOM 12)  
(WHO 27)  
(M-UE-29 ACT p.383)

Location:      • 2 pts on the anterior forearm, 4 cun proximal to the wrist fold on either side of the flexor carpi radialis (one pt is on the Pc channel, the other is roughly on the Lu = white)

Indications:      • hemorrhoids, anal prolapse (Ht & Pc pts are useful for itching)  
neuralgia of the forearm



經外穴 **Jīng Wài Xué / EXTRA POINTS – POINT ACTIONS**  
Locations and Primary Indications

**Points on the Dorsum of the Hand**

53. 中泉 **Zhōng Quán = Middle Spring** (WHO 28)  
(M-UE-33 ACT p.383)
- Location: • on the dorsum of the wrist - in the radio-carpal joint space, between the extensor digitorum & extensor pollicis longus tendons - (the depression between LI-5 & TB-4)
- Indications: • problems of the wrist & surrounding soft tissue, (esp. extension); spasms or numbness of the forearm  
asthma, bronchitis; stomach pain/spasm, enterocele; corneal opacities; stroke
- 
54. 腰痛 **Yāo Tòng (Dìǒn/Xué) = Lumbar Pain (Points)** (NCCAOM 47)  
(WHO 29)  
aka Zhi Shang (Yi, Er, San) = Treat Injury 1, 2 & 3 (N-UE-19 ACT p.354)  
aka Huo Luo Tong Yu Xue = Enliven & Unblock Blood Stasis Pts
- Location: **3 pts** on the dorsum of the hand between the metacarpal bones  
#1 - distal to the junction of the bases of the 2nd & 3rd metacarpals (aka Wei Ling)  
#2 - distal to the junction of the bases of the 3rd & 4th metacarpals  
#3 - distal to the junction of the bases of the 4th & 5th metacarpals (aka Jing Ling)
- Indications: #1 - pain due to trauma to the head, low back or limbs (concussion)  
#2 - pain due to trauma to the chest or limbs (steering wheel)  
#3 - pain due to trauma to the low back or limbs (sports)
- 
- 靈骨 **Líng Gǔ = Spirit/Numinous Bone**  
Master Tong pt (Dr Tan uses Master Tong's points) (MTA 22.05 p.32)
- Location: distal to the junction of the bases of the 1st & 2nd metacarpals
- Indications: low back pain, sciatica, lower limb pain; upper back pain, headache (migraine), hemiplegia  
menstrual problems and pain; difficult delivery, post partum pain;  
intestinal pain, inguinal pain; painful urination, testicular pain (shan disorders)
- 
55. 虎口 **Hǔ Kǒu = Tiger's Mouth**  
(see Ba Xie #58)
- Location: • on the dorsum of the hand, in the web between the thumb & forefinger,  
at the midpoint of a line connecting their MP joints (locate with the thumb extended)
- Indications: • fever, tonsillitis, headache, toothache, vertigo, insomnia, night sweats; shoulder pain

經 外 穴 **Jīng Wài Xué / EXTRA POINTS – POINT ACTIONS**  
*Locations and Primary Indications*

---

(NCCAOM 25)

56. 落 枕

**Luò Zhěn = Fall (off) Pillow = Crick in the Neck**

(WHO 30)

aka 外勞宮 Wài Láo Gōng = Outer Labor Palace (Outer Pc-8)

(NCCAOM 43)

(M-UE-24 ACT p.256)

Location:

- on the dorsum of the hand, between the 2nd & 3rd metacarpals, just proximal to their heads

Indications:

- torticollis, stiff neck, arm & shoulder pain, numbness, pain or swelling of the fingers; migraine; childhood indigestion, abdominal distention, epigastric pain, diarrhea; sore throat

57. 上 八 邪

**Shàng Bā Xié = Upper Eight Evils**

(M-UE-50 ACT p.255)

Location:

- 4 pts on the dorsum of each hand - between the metacarpals, just proximal to their heads (includes TB-3, Luo Zhen & LI-3)

Indications:

- same as Ba Xie (below)

58. 八 邪

**Bā Xié = Eight Evils**

(NCCAOM 5)

(WHO 31)

aka Bā Diǎn = 8 Spots/Points

(M-UE-22 ACT p.254)

Location:

- 4 pts on each hand - with the hand in a fist these points are between the knuckles, just distal to the MP joint (includes TB-2 & #55 Hu Kou)

Indications:

- numbness, pain, stiffness, inflammation of the fingers & joints, inflammation of the hand & forearm, snakebite; headache, stiff neck, sore throat, toothache
- (Raynaud's)

經外穴 **Jīng Wài Xué / EXTRA POINTS – POINT ACTIONS**  
*Locations and Primary Indications*

---

59. 五虎

Wǔ Hǔ = Five Tigers

(M-UE-45 ACT p.386)

Location 1:

- 5 pts on each hand, in slight depressions at the center of each PIP joint  
(this location includes the 3 points listed below, 60-61-62)

(Dr So p.130)

Location 2:

- 2 pts on each hand, at the high point of the index & ring finger MP joints

(ACT & ID)

Indications:

- inability to bend or straighten the fingers; neck pain; sciatic pain

60. 大骨空

Dà Gǔ Kōng = Big Bone Hollow

(NCCAOM 8)

(WHO 32)

(M-UE-15 ACT p.382)

Location:

- on the dorsal aspect of the thumb, at the center of the interphalangeal joint

Indications:

- eye diseases: cataracts, film over eyes, excess tearing, itching, or pain;  
vomiting and diarrhea

61. 中魁

Zhōng Kuí = Middle Eminence (Knuckle)

(NCCAOM 52)

(WHO 33)

(M-UE-16 ACT p.382)

Location:

- on the dorsal aspect of the middle finger, in the middle of the middle knuckle (PIP joint)

Indications:

- severe vomiting, hiccups, belching, esophageal spasm; nausea,  
loss of appetite/anorexia; toothache, nosebleed (moxa only pt)  
(try for severe morning sickness)

62. 小骨空

Xiǎo Gǔ Kōng = Little Bone Hollow

(NCCAOM 45)

(WHO 34)

(M-UE-17 ACT p.382)

Location:

- on the dorsal aspect of the little finger, at the center of the PIP joint

Indications:

- eye diseases as for Da Gu Kong, sore throat, arthritis of the fingers

經外穴 **Jīng Wài Xué / EXTRA POINTS – POINT ACTIONS**  
*Locations and Primary Indications*

---

**Points on the Palm**

63. 牙痛

Yá Tòng = Tooth Pain

(N-UE-1 ACT p.352)

Location:

- on the palm, between the 3rd & 4th MP joints, ~1 cun proximal to the web margin

Indications:

- toothache, TMJ pain

**Points on the Fingers**

64. 四縫

**Sì Fèng = Four Fissures / Cracks (Creases)**

(NCCAOM 38)

(WHO 35)

\* the transverse creases on the palmar surface of each finger (excluding the thumb)

Location 1:

- at the center of the PIP joint creases (4 points on each hand)

(M-UE-9 ACT p.256)

Location 2:

- at the center of the DIP joint creases

Location 3:

- 2 points per crease - at the medial & the lateral ends of each DIP or PIP transverse crease

Indications:

- infant indigestion or loss of appetite, childhood malnutrition syndrome (gan);  
intestinal parasites (esp. roundworm) - pertussis (whooping cough)

65. 十宣

**Shí Xuān = Ten Drains**

(NCCAOM 37)

(WHO 36)

(M-UE-1 ACT p.257)

Location:

- 10 points - one at the center of the tip of each finger (5 points per hand)

(Pc-9)

Indications:

- loss of consciousness, fainting due to fright, shock, heat exhaustion, high fever,  
convulsions/seizures or hysteria; numbness of the fingertips; hypertension; sore throat

***Lower Extremity Points***  
(21 pts – 14 bold – 12/48 W.H.O. – NCCAOM = 11/54)

**Points in the Gluteal Region**

66. 環中

**Huán Zhōng = Circle Center (Center of the Circle)**

(M-BW-34 ACT p.380)

Location:

- (best located in the lateral recumbent position) on the buttocks, 2/3 of the distance between the greater trochanter and the sacral hiatus (midway betw Huan Tiao GB-30 & GV-2)

Indications:

- leg pain, sciatica, low back pain, piriformis spasm w/ GB-30

67. 坐骨

**Zuò Gǔ = Sit Bone (Ischium)**

(N-BW-17 ACT p.263)

Location:

- on the buttocks, on the lateral edge of the ischial tuberosity, 1 cun inferior to the midpoint of a line connecting the greater trochanter and the [tip of the] coccyx

Indications:

- sciatica, lower limb paralysis, post polio sequela, problems involving hamstrings

**Points on the Anterior Thigh**

68. 邁步

**Mài Bù = Stride & Step – Walking/Ambulatory (Enable to Walk)**

(N-LE-23 ACT p.268)

Location:

- on the thigh, 3 cun inferior to ST-31

Indications:

- paralysis of the lower limb, wei/atrophy patterns (hemiplegia, post polio sequela)

經外穴 **Jīng Wài Xué / EXTRA POINTS – POINT ACTIONS**  
Locations and Primary Indications

**Points Around the Knee**

69. 百蟲窩

**Bǎi Chóng Wō = 100 Insects Nest**

(NCCAOM 3)

(WHO 37)

(M-LE-34 ACT p.390)

Location:

• on the anterior thigh, in the vastus medialis, 1 cun superior to SP-10

Indications:

• pruritis, urticaria, eczema

70. 髌骨

**Kuān Gǔ = Hip Bone (Femur)**

(NCCAOM 23)

(WHO 38)

(M-LE-28 ACT p.389)

Location:

• 2 points on the thigh, 1.5 cun medial and lateral to ST-34

Indications:

• arthritis of the knee, paralysis of the lower limb, problems involving the quadriceps

71. 鶴頂

**Hè Dǐng = Crane's Crown**

(NCCAOM 15)

(WHO 39)

(M-LE-27 ACT p.389)

Location:

• above the knee - at the midpoint of the superior border of the patella (when the knee is flexed)

alt. Location:

• the center of the patella (moxa only)

Indications:

• weakness of the knees &/or legs; problems of the knee joint or surrounding soft tissues  
(focus is on patella)

72. 內膝眼

**(Nèi) Xī Yǎn = (Inner/Medial) Knee Eye (Eyes of the Knee)**

(NCCAOM 46)

(WHO 40)

aka Xī Mù = Knee Eye(s) • yan = eyes or eye socket (see Yao Yan #35)

(M-LE-16 ACT p.271)

Location:

• below the kneecap - in the depression on the medial side of the patellar ligament  
(opposite ST-35/Du Bi which is the lateral eye, aka Wai Xi Yan)

(WHO 41)

Indications:

• problems of the knee & surrounding soft tissues (esp. meniscus & cruciates)

73. 膝翼

**Xī Yì = Knee Wings (Wings of the Knee)**

(Dr. So p.149)

Location:

• 2 points - one on either side of the knee - in the joint space between the femur & the tibia  
at the anterior **or** posterior edge of the medial & lateral collateral ligaments respectively.  
• 4 points - as above but, both anterior **and** posterior to the collateral ligaments

Indications:

• knee pain, esp. focused at the medial &/or lateral aspects.

經外穴 **Jīng Wài Xué / EXTRA POINTS – POINT ACTIONS**  
Locations and Primary Indications

**Points on the Lower Leg**

74. 闌尾

**Lán Wěi (Xué) = Appendix (Point)**

(NCCAOM 24)

(WHO 42)

lit. end of the tail (some sources say this is a Right side only pt)

(M-LE-13 ACT p.270)

Location:

• below the knee - 1 to 2 cun inferior to ST-36 (in the tibialis anterior muscle) (1 cun above ST-37)

Indications:

• Dx & Tx of acute or chronic appendicitis, indigestion; lower limb paralysis, foot drop

75. 膽囊

**Dǎn Náng (Xué/Diǎn) = Gall Bladder (Point)**

(NCCAOM 10)

(WHO 43)

(some sources say this is a Right side only pt)

(M-LE-23 ACT p.276)

Location:

• below the head of the fibula, along the anterior edge of the peroneus longus muscle,  
1 to 2 cun inferior to GB-34

Indications:

• Dx & Tx of gall bladder & bile duct disorders, pain following GB surgery; leg paralysis

76. 陵下

**Líng Xià = Below the Mound (Inferior/Lower GB-34)**

(N-LE-17 ACT p.358)

Location:

• 2 cun below GB-34 (Yang **Ling** Quan)

Indications:

• deafness; cholecystitis, biliary ascariasis

77. 陵後

**Líng Hòu = Behind the Mound (Posterior GB-34)**

(M-LE-24 ACT p.298)

Location:

• below the knee - posterior and inferior to the head of the fibula.  
(in a small depression between the peroneus and gastrocnemius muscles, over the common peroneal nerve)

Indications:

• sciatica, knee problems, lower limb paralysis

78. 陵後下

**Líng Hòu Xià = Below or Lower Ling Hou**

(M-LE-25 ACT p.389)

Location:

• 1/2 cun below Ling Hou

Indications:

• peroneal nerve pain, sciatica, lower limb paralysis; arthritic knee

經外穴 **Jīng Wài Xué / EXTRA POINTS – POINT ACTIONS**  
Locations and Primary Indications

**Points Around the Ankle**

79. 腦清 **Nǎo Qīng = Brain Clear / Clear the Brain** (N-LE-4 ACT p.274)
- Location: • on the anterior lower leg just above the ankle, slightly lateral to the tibia/tibialis anterior, 1.5 cun superior to ST-41
- Indications: • lassitude, vertigo, amnesia - mental retardation (from encephalitis)  
drop foot (due to infantile paralysis/polio)
80. 內踝尖 **Nèi Huái Jiān = Inner Anklebone Tip** (NCCAOM 26)  
(WHO 44)  
(M-LE-17 ACT p.388)
- Location: • at the tip (prominence) of the medial malleolus
- Indications: • gastroc spasm, tonsillitis, toothache, lochiorrhea
81. 外踝尖 **Wài Huái Jiān = Outer Anklebone Tip** (NCCAOM 42)  
(WHO 45)  
(M-LE-22 ACT p.388)
- Location: • at the tip (prominence) of the lateral malleolus
- Indications: • beriberi, spasm of the peroneals, paralysis of the toes, paraplegia, severe headache  
toothache, sore throat, sublingual veins engorged in infants

**Points on the Dorsum of the Foot**

82. 上八風 **Shàng Bā Fēng = Upper 8 Winds** (M-LE-41 ACT p.300)
- Location: • 4 points on the dorsum of each foot, between the metatarsals, proximal to the MP joints.  
(includes Lr-3, ST-43 & GB-42)
- Indications: • same as the Ba Feng points below
83. 八風 **Bā Fēng = 8 Winds** (NCCAOM 2)  
(WHO 46)  
(M-LE-8 ACT p.299)
- aka Ba Chong = 8 Surges or 8 Thoroughfares
- Location: • 4 points on each foot - between the toes, 1/2 cun proximal to the web margin;  
at the skin change just distal to the MP joints (includes Lr-2, ST-44 & GB-43)
- Indications: • numbness &/or inflammation of the foot or toes, snakebite, peripheral neuritis;  
headache, toothache, stomach pain; irregular menses; malaria



經外穴 Jīng Wài Xué / EXTRA POINTS – POINT ACTIONS  
Locations and Primary Indications

Points on the Toes

84. 氣端

**Qì Duān = Extremity of Qi / Qi to Extremities**

(NCCAOM 30)

(WHO 47)

(M-LE-6 ACT p.387)

Location:

• 5 points on each foot - at the center of the end of each toe (analogous to Shi Xuan)

Indications:

• syncope, apoplectic coma; inflam. of the foot, beriberi, numbness or paralysis of the toes

Points on the Plantar Aspect of the Foot

85. 獨陰

**Dú Yīn = Lone/Sole/Solitary Yin**

(WHO 48)

aka Du Hui = Solitary Meeting

(FCA p.410 / Dr So p.153)

Location:

• on the underside of the 2nd toe, at the mid-point of the DIP joint crease

Indications:

• sudden, severe heart pain, angina, severe hiccups; abdominal pain, vomiting; hernia; irregular or abnormal menses, dysmenorrhea, ovaritis etc.; morning sickness; retention of placenta, or to expel a dead fetus

86. 里內庭

**Lǐ Nèi Tíng = Inside Inner Courtyard (Inside ST-44)**

(M-LE-1 ACT p.386)

Location:

• on the ball of the foot - between the 2nd & 3rd toes, just distal to the MP joints (underside of ST-44)

Indications:

• seizures, infant/childhood convulsions; pain in the toes or ball of the foot; food retention

87. 失眠

**Shī Mián = Lost Sleep**

(M-LE-5 ACT p.387)

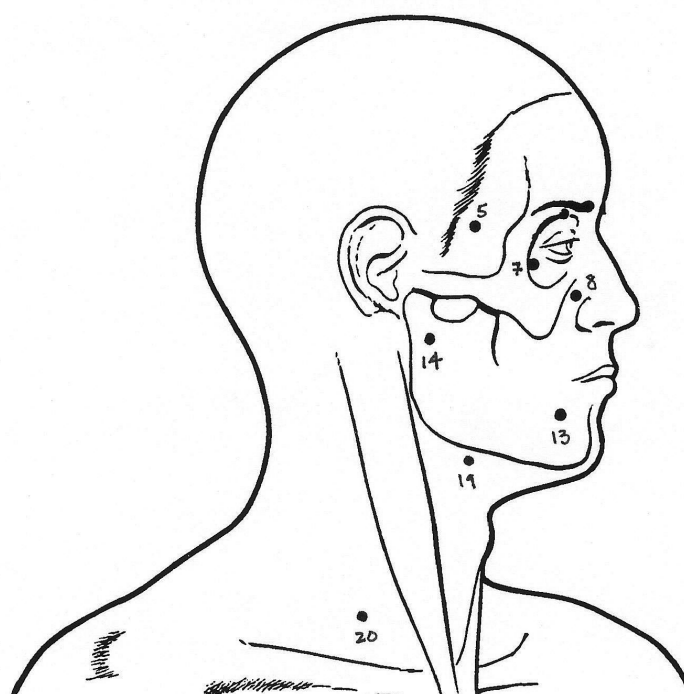
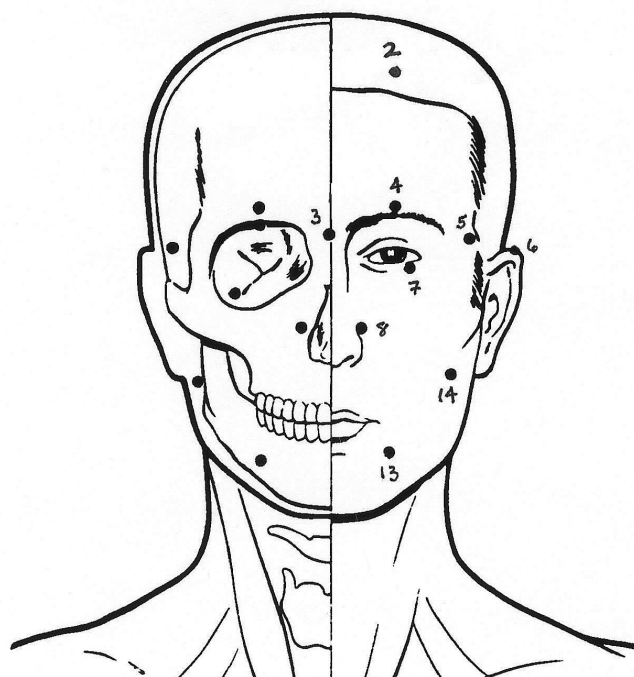
Location:

• on the bottom of the foot - in the center of the heel

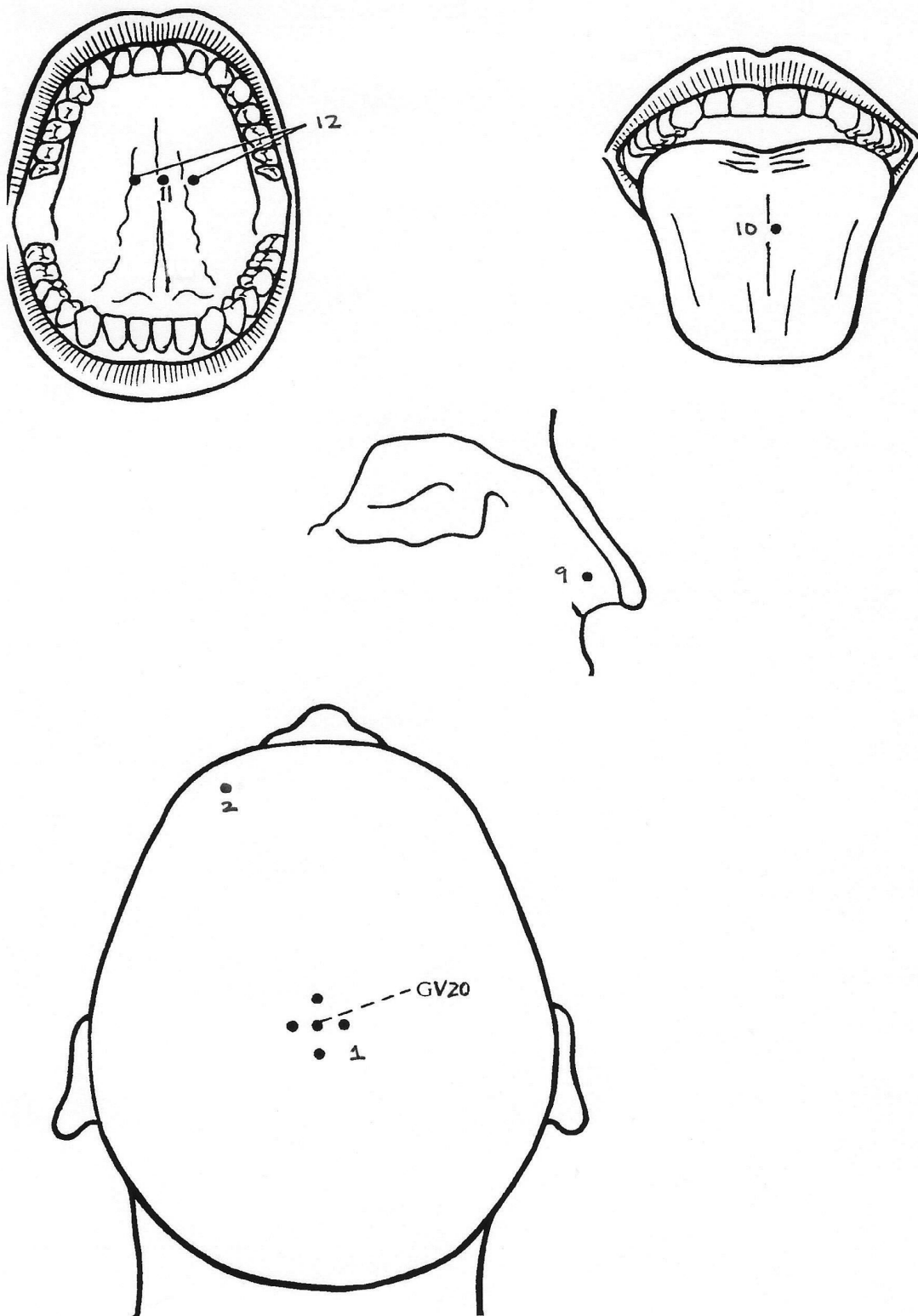
Indications:

• insomnia; pain of the heel or sole (plantar fascitis)

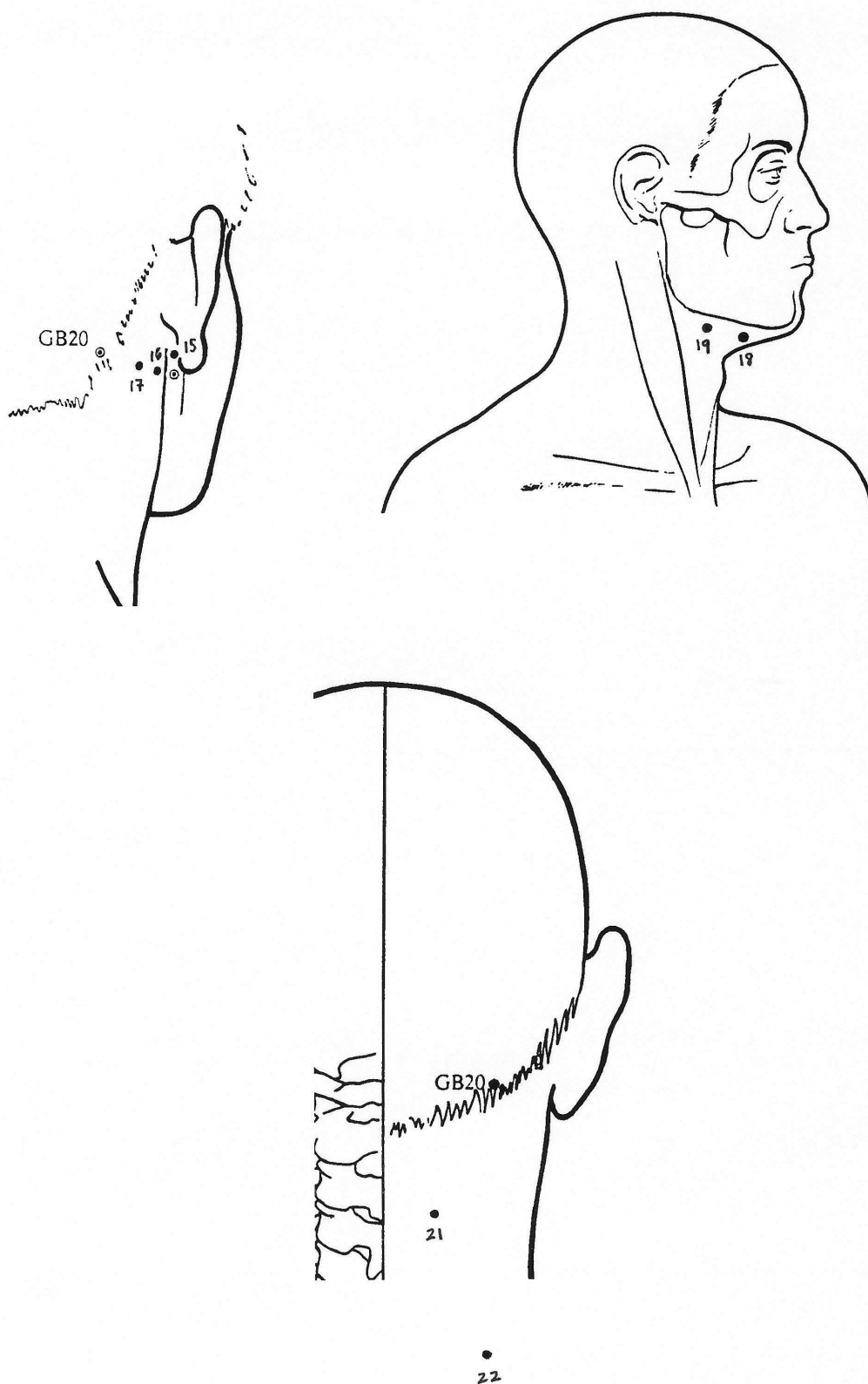
Head 1



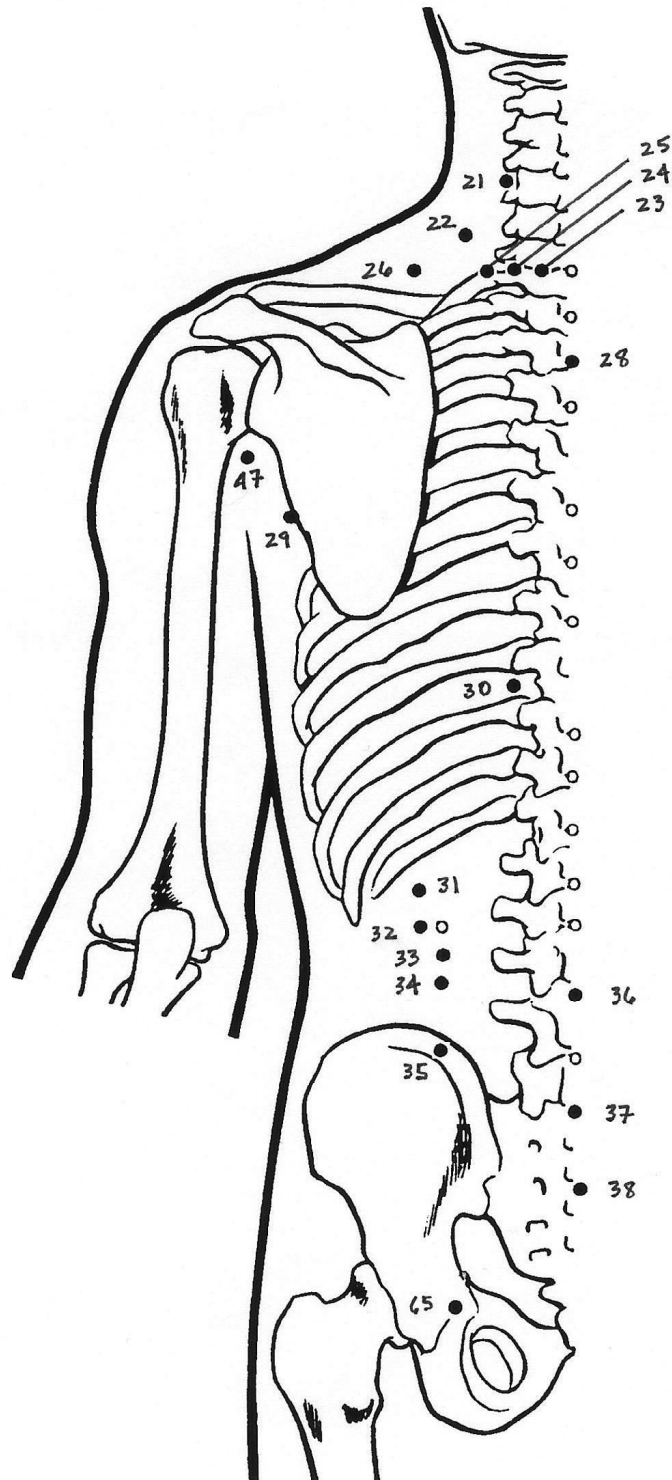
Head 2



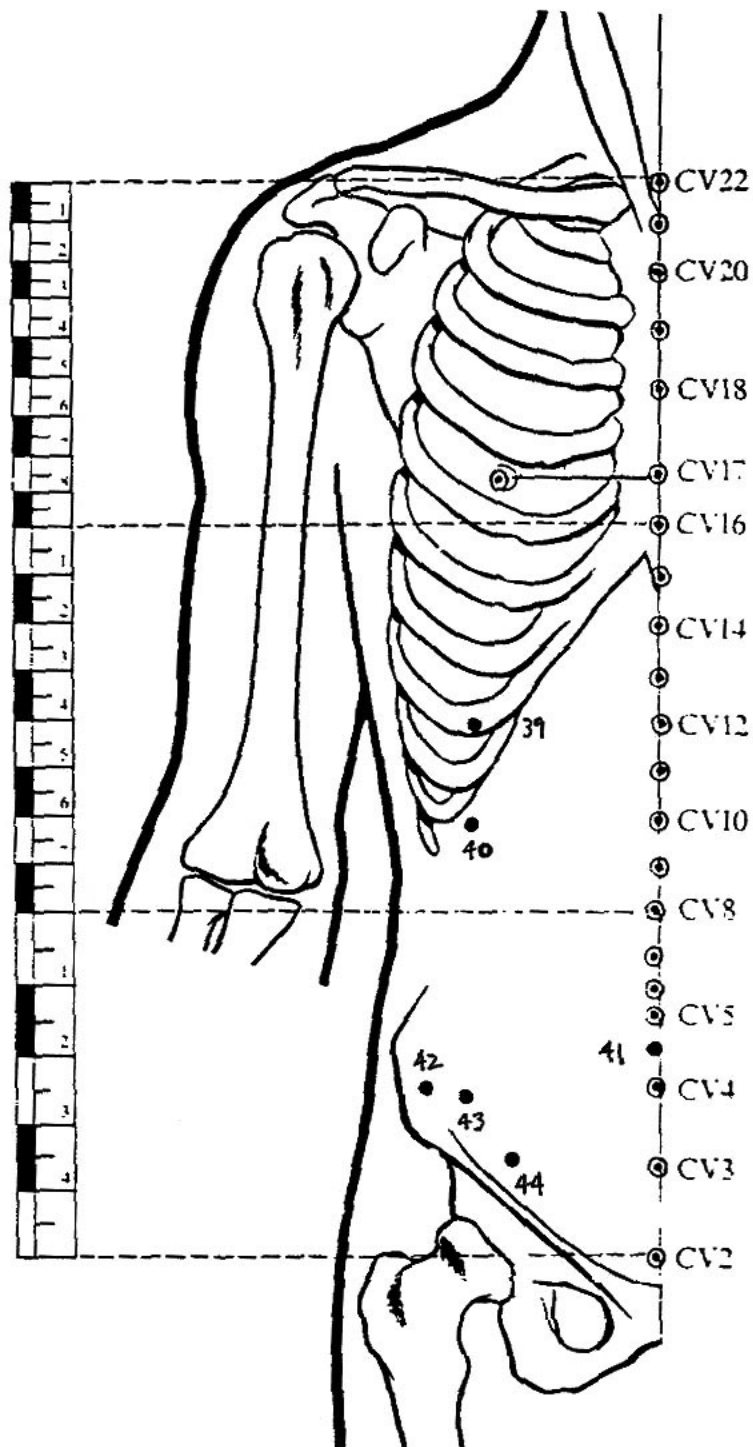
Head 3



Torso – Back

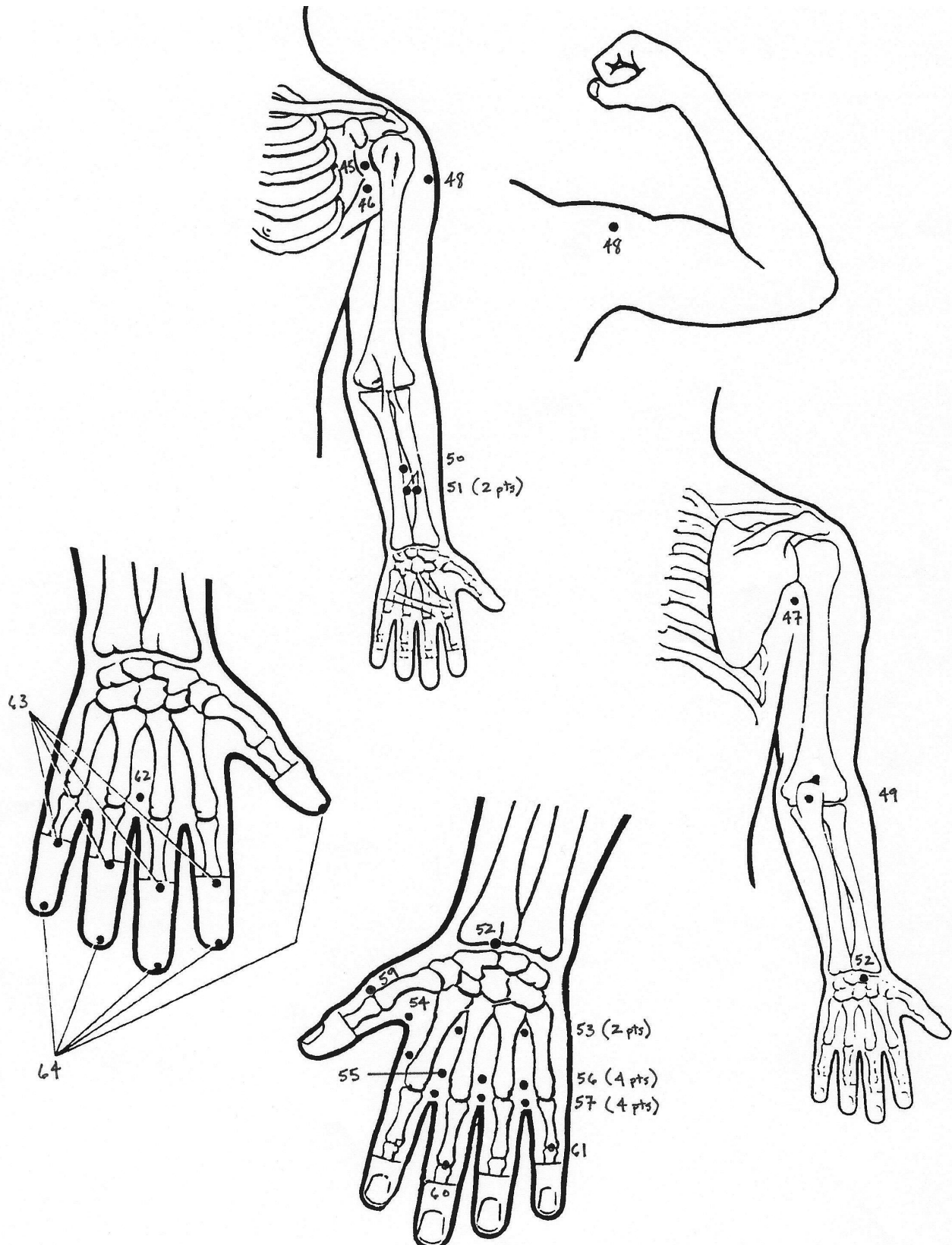


Torso – Chest & Abdomen





Upper Extremity



Lower Extremity

